



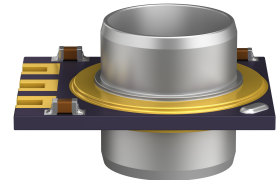
## Pressure sensors

### Datasheet

**Series/Type:** AMD 2.500 KA VR Z1E L P  
**Ordering code:** B58622M3244B507  
**Date:** 2019-05-27  
**Version:** 1

## Applications

- Miniaturized media separated differential pressure transmitters
- Sensing element based on piezoresistive MEMS technology
- Suitable for applications with pressure ranges of 0 bar to 2.5 bar and temperature ranges of  $-40\text{ °C}$  ...  $125\text{ °C}$
- Voltage output (0.5 V ... 4.5 V) proportional to pressure and supply voltage (ratiometric)



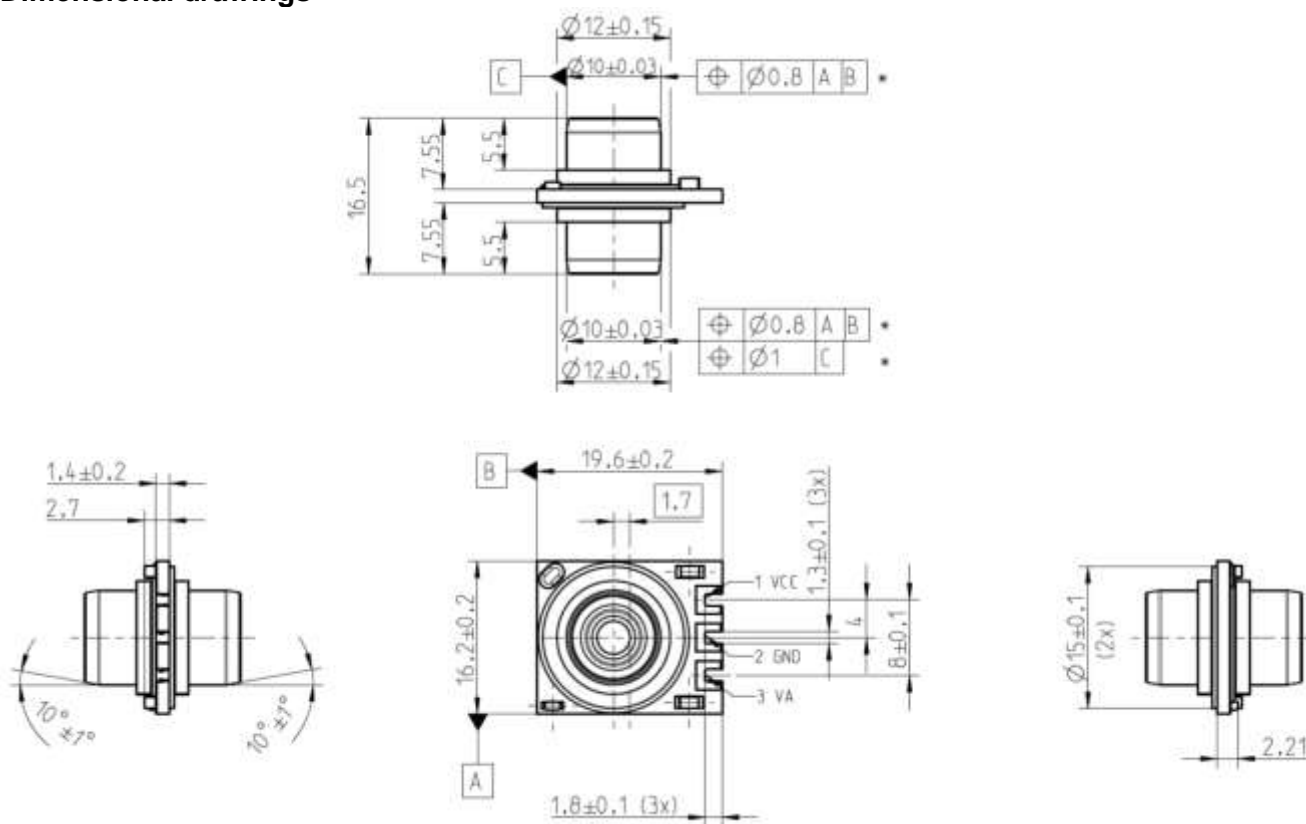
## Features

- High media resistance on both pressure ports due to high alloyed steel diaphragms: suitable for all media not reacting with high alloyed steel DIN 1.4435 or 1.4404 like fuel, diluted acids, contaminated air, exhaust gases
- Miniaturized integrated ceramic package for OEM applications
- High accuracy during temperature changes due to compact design
- The integrated signal conditioner compensates non-linearity and temperature errors and supplies a precise calibrated output signal with a high immunity against electromagnetic influences (EMI).
- Overvoltage and reverse voltage protection
- Various mounting solutions due to the stainless steel interfaces
- RoHS-compatible

## Options

- Customer specific output characteristics on request
- Housing and connector on request

Dimensional drawings



Dimensions in mm \* cpk > 1.33

## 1. Technical data

### Absolute maximum ratings

Parameter	Symbol	Conditions	Min.	Typ.	Max.	Unit
<b>Temperature ranges</b>						
Storage temperature range	$T_{st}$	1)	-40		+140	°C
Operating temperature range	$T_a$	2)	-40		+125	°C
Compensated temperature range	$T_c$	3)	-20		+120	°C
Soldering temperature	$T_{solder}$	<5 s (no reflow soldering)			+240	°C

### Pressure ranges

Rated differential pressure	$p_r$	One-sided output <sup>4)</sup>	0 ... 2.5			bar
Overpressure	$p_{ov}$	5)			5	bar
Burst pressure	$p_{burst}$	5)			7.5	bar
Line pressure	$p_{line}$	5)	0.1		16	bar a
Line overpressure	$p_{ov\ line}$	5)	0.01		25	bar a
Line burst pressure	$P_{burst\ line}$	5)			30	bar a

### Supply voltage /-current

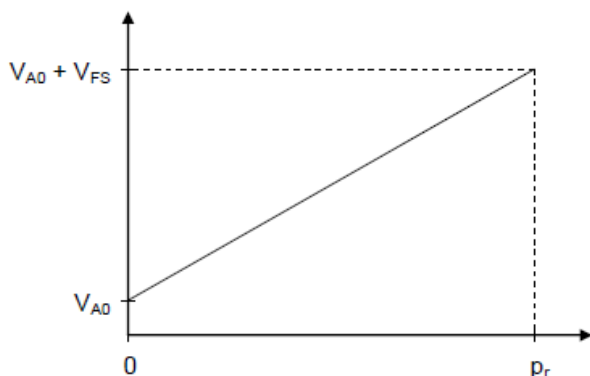
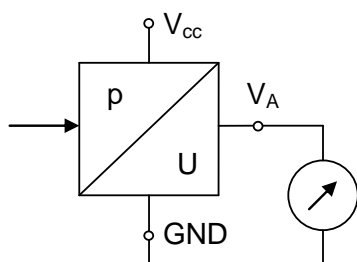
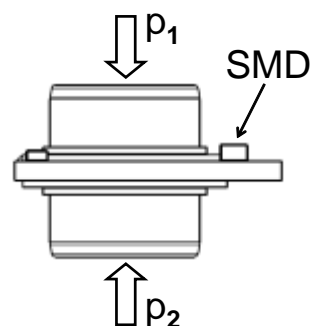
Supply voltage	$V_{CC}$	6)	4.5		5.5	V
Supply current	$I_{CC}$	without output current $I_A$			7	mA
Signal output current	$I_A$	7)			2	mA
Load resistor	$R_L$		2.7			k $\Omega$
Overvoltage	$V_{ov}$	8)	33			V
Output signal at sensor failure	$V_{ERR}$				0.25	V

### Output signal (ratiometric) @ $T_a = 25^\circ\text{C}$ , $I_A < 0.1\ \text{mA}$ , $V_{A0} = 5\ \text{V}$

Offset	$V_{A0}$	One-sided output <sup>9)</sup>		0.5		V
Signal at rated pressure	$V_{pr}$	One-sided output <sup>10)</sup>		4.5		V

### Measuring error $I_A < 0.1\ \text{mA}$ , $p_{line} = \text{ambient pressure}$

Non-linearity	L	<sup>10), 11)</sup>		$\pm 0.25$	$\pm 0.5$	% FS
Response time	$t_{10-90}$	<sup>11)</sup>			10	ms
Total error	$E_T$	$T_a = 0 \dots 85^\circ\text{C}$ , <sup>12)</sup>			$\pm 1.0$	% FS
	$E_T$	$T_a = -20 \dots 120^\circ\text{C}$ , <sup>12)</sup>			$\pm 1.5$	% FS

**2. Characteristics**
**One-sided output**

**3. Connection diagram**
**Supply voltage and signal**

**Pressure feed**

**Terminal assignment**

Pin	Symbol	Signal
1	VCC	Supply voltage
2	GND	Ground
3	VA	Output signal

$$p_r = p_1 - p_2$$

$$p_{ov} = p_1 - p_2$$

#### 4. Type designation

Pressure ranges are distinguished by color:

Type	Rated differential pressure	Color
AMD 2.500 KA VR Z1E ST B507	0 ... 2.5 bar	Blue

#### 5. Symbols and terms

1) **Storage temperature range  $T_{st}$**

A storage of the pressure sensor within the temperature range  $T_{st,min}$  up to  $T_{st,max}$  and without applied pressure and supply voltage will not affect the performance of the pressure sensor.

2) **Operating temperature range  $T_a$**

An operation of the pressure sensor within the temperature range  $T_{a,min}$  up to  $T_{a,max}$  will not affect the performance of the pressure sensor.

3) **Compensated temperature range  $T_c$**

While operating the pressure sensor within the temperature range  $T_{c,min}$  up to  $T_{c,max}$ , the deviation of the output signal will not exceed the temperature specific measurement error. Out of the compensated temperature range, the deviations may increase.

4) **Rated pressure  $p_r$**

Within the rated pressure range 0 up to  $p_r$  (symmetrical output:  $\pm p_r$ ) the signal output characteristic corresponds to this specification. Rated pressure is defined as:  $p_r = p_1 - p_2$ .

5) **Overpressure  $p_{ov}$ , Burstpressure  $p_{Burst}$ , Line pressure  $p_{Line}$ , Line overpressure  $p_{ov\ line}$**

1000 pressure cycles within the pressure range 0 up to  $p_{ov}$  will not affect the performance of the pressure sensor. Overpressure is defined as:  $p_{ov} = p_1 - p_2$ . The line pressure is defined as the maximum common mode pressure affecting on both pressure ports simultaneously. Line pressure above ambient pressure may lead to an additional total error of the sensor. For application with higher line pressure: By reducing the overpressure the line pressure can be enlarged accordingly ( $p_{ov} + p_{ov\ line} < 40\ bar$ ).

6) **Supply voltage  $V_{CC}$**

$V_{CC,max}$  is the maximum permissible supply voltage, which can be applied without damages.  
 $V_{CC,min}$  is the minimum required supply voltage, which has to be applied for normal operation.

7) **Signal output current  $I_A$**

$I_{A,max}$  is the maximum permissible sink current of the signal output. Exceeding (e.g. short circuit) may cause irreparable damages.

8) **Overvoltage  $V_{OV}$**

Maximum voltage being applied in any polarity to all contact pins without damaging the pressure sensor.

9) **Offset  $V_{A0}$**

The offset  $V_{A0}$  is the signal output  $V_A(p = 0)$  at zero pressure. The value is related to the supply voltage  $V_{CC}$ .

One-sided output:  $V_{A0} = 0.1 V_{CC}$

Symmetrical output:  $V_{A0} = 0.5 V_{CC}$

10) **Signal span (Full Scale)**

The value is related to the supply voltage  $V_{CC}$ .

One-sided output:  $V_{FS} = FS = V_A(p_r) - V_{A0} = 0.8 V_{CC}$

Symmetrical output:  $V_{FS} = FS = V_A(+p_r) - V_A(-p_r) = 0.8 V_{CC}$

11) **Non-linearity L (including pressure hysteresis)**

The non-linearity is the deviation of the real sensor characteristic  $V_A = f(p)$  from the ideal straight line.

It can be approximated by a polynomial of second order, with the maximum at  $p_x = p_r / 2$ .

The equation to calculate the non-linearity is:

$$L = \frac{V_A(p_x) - V_{A0}}{V_A(p_r) - V_{A0}} \cdot \frac{p_x}{p_r}$$

**12) Response time  $t_{10-90}$** 

Delay between a pressure change (10 ... 90%  $p_r$ ) and the corresponding signal output change (10 ... 90% FS) based on theoretical estimations.

**13) Total measuring error  $E_T$** 

The total measuring error includes nonlinearity, pressure hysteresis, temperature hysteresis, and signal noise. It describes the deviation of the signal to the nominal output signal.

## Cautions and warnings

### Storage

The pressure sensors should be stored in their original packaging. They should not be placed in harmful environments such as corrosive gases nor exposed to heat or direct sunlight, which may cause deformations. Similar effects may result from extreme storage temperatures and climatic conditions.

Avoid storing the pressure sensors in an environment where condensation may form or in a location exposed to corrosive gases, which will adversely affect their performance.

### Mounting and Soldering

Be sure that no shear forces caused by sensors mounting are effecting between the pressure ports. It may have influence on the signal accuracy or may damage the pressure sensor. Axial forces in direction of pressure port should not exceed 100 N.

The thermal capacity of the pressure sensor is normally low, so steps should be taken to minimize the effects of external heat. High temperatures may lead to damage or changes in characteristics.

A non-corrosive type of flux resin should be used and complete removal of the flux is recommended. Avoid rapid cooling due to dipping in solvent. Note that the output signal may change if pressure is applied to the terminals during soldering.

Release mounting and soldering processes carefully.

### Operation

Media compatibility with the pressure sensors must be ensured to prevent their failure (see page 2).

The use of other media can cause damage and malfunction.

Never use them in atmospheres containing explosive liquids or gases.

Ensure pressure equalization to the environment, if relative pressure sensors are used.

Avoid operating the pressure sensors in an environment where condensation may form or in a location exposed to corrosive gases. These environments adversely affect their performance.

If the operating pressure is not within the rated pressure range, it may change the output characteristics.

Be sure that the applicable pressure does not exceed the overpressure, it may damage the pressure sensor.

Do not exceed the maximum rated supply voltage, it may damage the pressure sensor.

Do not exceed the rated storage temperature range, it may damage the pressure sensor.

Temperature variations in both the ambient conditions and the media (liquid or gas) can affect the accuracy of the output signal from the pressure sensors. Be sure to check the operating temperature range and thermal error specification of the pressure sensors to determine their suitability for the application.

Connections must be wired in accordance with the terminal assignment specified in this publication.

Care should be taken as reversed pin connections can damage the pressure sensors or degrade their performance.

Contact between the pressure sensor terminals and metals or other materials may cause errors in the output characteristics.

This listing does not claim to be complete, but merely reflects the experience of TDK Electronics AG.

### Display of ordering codes for TDK Electronics products

The ordering code for one and the same product can be represented differently in data sheets, data books, other publications, on the company website, or in order-related documents such as shipping notes, order confirmations and product labels. **The varying representations of the ordering codes are due to different processes employed and do not affect the specifications of the respective products.** Detailed information can be found on the Internet under [www.tdk-electronics.tdk.com/orderingcodes](http://www.tdk-electronics.tdk.com/orderingcodes).



## Important notes

The following applies to all products named in this publication:

1. Some parts of this publication contain **statements about the suitability of our products for certain areas of application**. These statements are based on our knowledge of typical requirements that are often placed on our products in the areas of application concerned. We nevertheless expressly point out **that such statements cannot be regarded as binding statements about the suitability of our products for a particular customer application**. As a rule we are either unfamiliar with individual customer applications or less familiar with them than the customers themselves. For these reasons, it is always ultimately incumbent on the customer to check and decide whether a product with the properties described in the product specification is suitable for use in a particular customer application.
2. We also point out that **in individual cases, a malfunction of electronic components or failure before the end of their usual service life cannot be completely ruled out in the current state of the art, even if they are operated as specified**. In customer applications requiring a very high level of operational safety and especially in customer applications in which the malfunction or failure of an electronic component could endanger human life or health (e.g. in accident prevention or life-saving systems), it must therefore be ensured by means of suitable design of the customer application or other action taken by the customer (e.g. installation of protective circuitry or redundancy) that no injury or damage is sustained by third parties in the event of malfunction or failure of an electronic component.
3. **The warnings, cautions and product-specific notes must be observed.**
4. In order to satisfy certain technical requirements, **some of the products described in this publication may contain substances subject to restrictions in certain jurisdictions (e.g. because they are classed as hazardous)**. Useful information on this will be found in our Material Data Sheets on the Internet ([www.tdk-electronics.tdk.com/material](http://www.tdk-electronics.tdk.com/material)). Should you have any more detailed questions, please contact our sales offices.
5. We constantly strive to improve our products. Consequently, **the products described in this publication may change from time to time**. The same is true of the corresponding product specifications. Please check therefore to what extent product descriptions and specifications contained in this publication are still applicable before or when you place an order.

We also **reserve the right to discontinue production and delivery of products**. Consequently, we cannot guarantee that all products named in this publication will always be available. The aforementioned does not apply in the case of individual agreements deviating from the foregoing for customer-specific products.

6. Unless otherwise agreed in individual contracts, **all orders are subject to our General Terms and Conditions of Supply**.
7. **Our manufacturing sites serving the automotive business apply the IATF 16949 standard**. The IATF certifications confirm our compliance with requirements regarding the quality management system in the automotive industry. Referring to customer requirements and customer specific requirements ("CSR") TDK always has and will continue to have the policy of respecting individual agreements. Even if IATF 16949 may appear to support the acceptance of unilateral requirements, we hereby like to emphasize that **only requirements mutually agreed upon can and will be implemented in our Quality Management System**. For clarification purposes we like to point out that obligations from IATF 16949 shall only become legally binding if individually agreed upon.

## Important notes

8. The trade names EPCOS, CeraCharge, CeraDiode, CeraLink, CeraPad, CeraPlas, CSMP, CTVS, DeltaCap, DigiSiMic, ExoCore, FilterCap, FormFit, LeaXield, MiniBlue, MiniCell, MKD, MKK, MotorCap, PCC, PhaseCap, PhaseCube, PhaseMod, PhiCap, PowerHap, PQSine, PQvar, SIFERRIT, SIFI, SIKOREL, SilverCap, SIMDAD, SiMic, SIMID, SineFormer, SIOV, ThermoFuse, WindCap are **trademarks registered or pending** in Europe and in other countries. Further information will be found on the Internet at [www.tdk-electronics.tdk.com/trademarks](http://www.tdk-electronics.tdk.com/trademarks).

Release 2018-10